

Project: Swing Bag

DESIGNER: TARI COLBY



Use fat eighth and fat quarter fabrics to create an easy Four-Patch bag. Change the fabric, straps, and embellishments to alter the look and suit your style.

## Project: Swing Bag

**Materials**

- 9×22" piece (fat eighth) black-and-yellow dot (bag)
- 9×22" piece (fat eighth) black-and-yellow circle print (bag)
- $\frac{1}{3}$  yard or 18×22" piece (fat quarter) black-and-yellow print (lining)
- $\frac{1}{3}$  yard batting
- 2—2" squares fusible interfacing
- 1  $\frac{3}{4}$  yards 1"-wide black cotton webbing
- $\frac{1}{3}$  yard  $\frac{1}{2}$ "-diameter black ball fringe trim
- 2—1  $\frac{3}{8}$ "-diameter metal rings
- Magnetic snap closure

**Finished Bag:** 9×10"

**Quantities** are for 44/45"-wide, 100% cotton fabrics.

**Measurements** include  $\frac{1}{4}$ " seam allowances. Sew with right sides together unless otherwise stated.

**Cut Fabrics**

Cut pieces in the following order.

**From black-and-yellow dot, cut:**

- 4—5  $\frac{1}{2}$ ×5" rectangles

**From black-and-yellow circle print, cut:**

- 4—5  $\frac{1}{2}$ ×5" rectangles

**From black-and-yellow print, cut:**

- 1—9  $\frac{1}{2}$ ×19" rectangle for lining

**From batting, cut:**

- 2—9  $\frac{1}{2}$ ×10  $\frac{1}{2}$ " rectangles

**From webbing, cut:**

- 1—1×53" piece
- 2—1×3" pieces

**Assemble Outer Bag**

- 1.** Referring to **Diagram 1**, lay out two black-and-yellow dot 5  $\frac{1}{2}$ ×5" rectangles and two black-and-yellow circle print 5  $\frac{1}{2}$ ×5" rectangles in pairs. Join long edges of rectangles in each pair. Press seams in opposite directions. Join pairs to make a Four-Patch unit. Press seam in one direction. The unit should be 9  $\frac{1}{2}$ ×10  $\frac{1}{2}$ " including seam allowances. Repeat to make a second Four-Patch unit.
- 2.** Layer a Four-Patch unit and a 9  $\frac{1}{2}$ ×10  $\frac{1}{2}$ " batting rectangle; baste together  $\frac{1}{4}$ " from outer edges. Repeat with remaining Four-Patch unit and batting rectangle.
- 3.** Referring to **Diagram 2**, align edge of ball fringe trim along one short edge of a Four-Patch unit; baste along basting line.
- 4.** Join Four-Patch units along side and lower edges, being careful not to catch fringe balls in seam (**Diagram 3**). Clip corners; turn right side out and press to make outer bag.
- 5.** Thread one 3"-long webbing piece through one metal ring. Align cut ends of webbing; baste to make a tab. Repeat with remaining 3"-long webbing piece and metal ring.
- 6.** Matching raw edges, position one tab at top left-hand edge of outer bag and the second tab on the opposite side (**Diagram 4**); baste.

**Assemble Lining**

- 1.** Following manufacturer's instructions, center and fuse an interfacing 2" square to wrong side of black-and-yellow print bag lining  $\frac{1}{2}$ " from short edges (**Diagram 5**).
- 2.** Attach magnetic snap closure to right side of bag lining  $\frac{3}{4}$ " from short edges (**Diagram 6**).
- 3.** Fold bag lining in half crosswise with right sides together. Join side edges, leaving a 4" opening along one side for turning (**Diagram 7**). Clip corners and press to make bag lining.

**Finish Bag**

- 1.** Insert outer bag into bag lining right sides together, matching seams; pin. Sew together along top edges (**Diagram 8**).
- 2.** Turn bag to right side through opening in lining. Slip-stitch opening closed. Insert lining into bag; press.
- 3.** Turn under  $\frac{1}{2}$ " at one end of 53"-long webbing and thread an additional 1  $\frac{1}{2}$ " through one metal ring. Referring to **Diagram 9**, enclose ring and stitch folded edge to secure end of webbing. Repeat with remaining ring and end of webbing on opposite side to make the strap and complete bag.

Project: Swing Bag

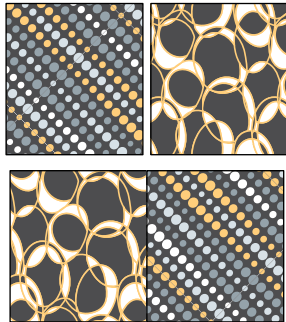


DIAGRAM 1

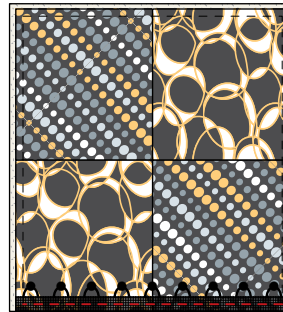


DIAGRAM 2

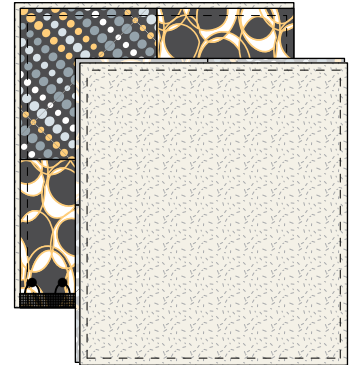


DIAGRAM 3



DIAGRAM 4

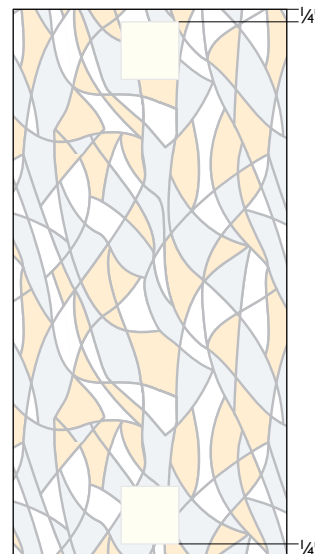


DIAGRAM 5

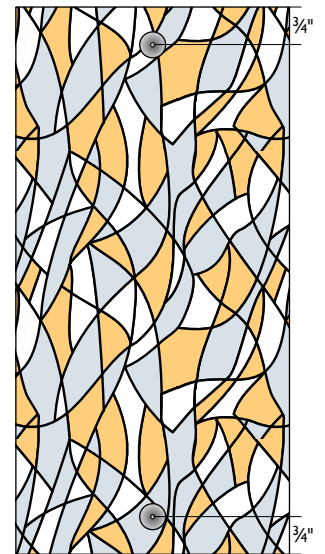


DIAGRAM 6

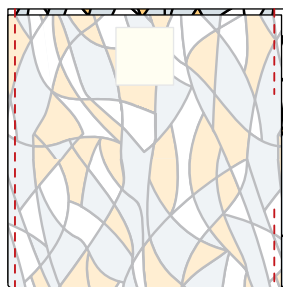


DIAGRAM 7



DIAGRAM 8

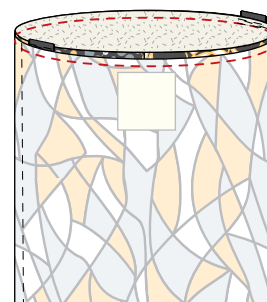


DIAGRAM 9