

Project: On Pins and Needles

DESIGNER: HEATHER BAILEY



PHOTOGRAPHER: CAMERON SADEGHPOUR

Project: On Pins and Needles

Materials

- ⅛ yard print No. 1 (top and bottom)
- ⅛ yard print No. 2 (side band)
- 1 yard ⅜"- to ⅝"- wide ribbon
- 2—¾"-diameter buttons
- Polyester fiberfill
- Doll maker's needle
- Water-soluble marking pen

Finished pincushion: 3¾×3¾×1"

Quantities are for 44/45"-wide, 100% cotton fabrics.

Measurements include a ¼" seam allowance. Sew with right sides together unless otherwise stated.

cut fabrics

Cut pieces in the following order.

Make templates for patterns A and B. Be sure to transfer the dots (matching points) marked on the patterns to the templates, then to the fabric pieces.

From print No. 1, cut:

- 2 of Pattern A

From print No. 2, cut:

- 1 of Pattern B

assemble pincushion

1. Using sharp scissors, clip halfway into seam allowance along edges of B strip at marking dots, which will line up with corners of A squares. Take care not to cut into or beyond seam lines.
2. Fold B piece in half widthwise and sew together across short ends (Diagram 1). Press seam open.
3. Matching dots, sew one long edge of the B piece to A square (Diagram 2).

4. Repeat Step 3, joining remaining A square to unsewn edge of the B piece, leaving a 1½" opening for turning along one side (Diagram 3).

5. Turn pincushion right side out. Stuff firmly with polyester fiberfill. Hand-sew opening closed.

finish pincushion

- 1) Thread doll maker's needle with ribbon. Stitch down through center of pincushion at mark, leaving a 4"-long tail of ribbon on top of pincushion. Wrap ribbon up over one side of pincushion and stitch down again through center of pincushion (Diagram 4). Pull ribbon snug against pincushion, being careful not to shorten ribbon tail. Repeat with remaining sides (Diagram 5).

- 2) Trim ribbon ends to ½". Fold each end in half, and whipstitch to pincushion.

- 3) Center one button on pincushion top over ribbon ends and second at bottom center. Taking long stitches through the center of pincushion, sew buttons firmly in place.

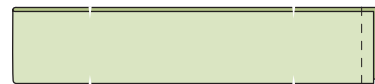


DIAGRAM 1

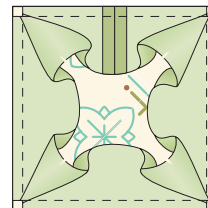


DIAGRAM 2

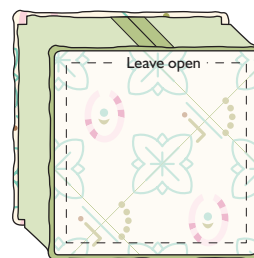


DIAGRAM 3

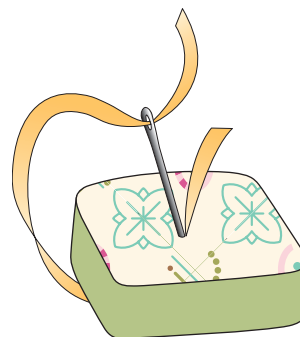
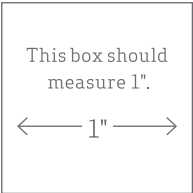
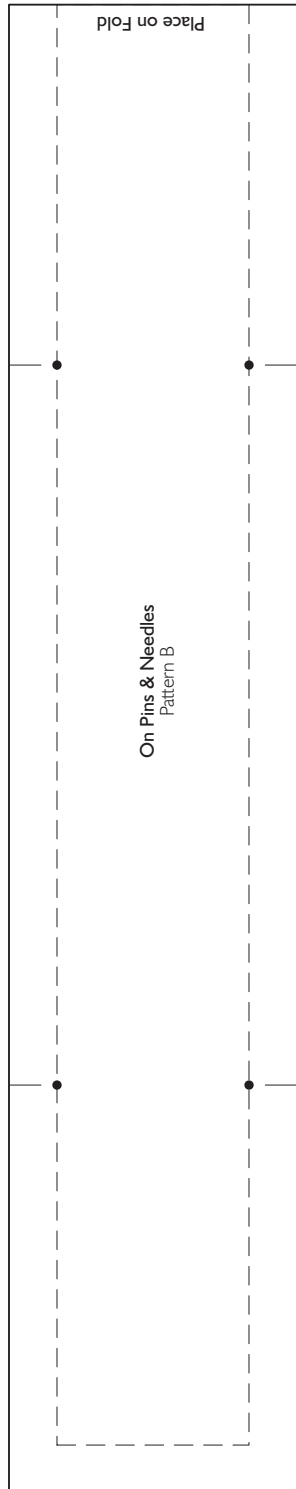


DIAGRAM 4



DIAGRAM 5

Project: On Pins and Needles



*** NOTE:**
When printing downloadable pdf, set Page Scaling preference to NONE to print patterns at 100%. Do NOT "Shrink to Fit" or "Fit to Printable Area."